

# DMPS VIRTUAL LEARNING PARENT GUIDE

AUGUST 2020-2021



PARENT/CAREGIVER GUIDE  
TO  
**DMPS PK-12**  
**VIRTUAL LEARNING**



Becoming the Model for **Urban Education**

# OVERVIEW

- Student Expectations
- Teacher Expectations
- Student Experience
- Attendance
- Canvas Support for Parents/Guardians
- Technology
- Meal Sites
- Childcare
- Family Support Resources



# STUDENT EXPECTATIONS

- Attend and participate in virtual instruction during scheduled time
- Engage in learning experiences with their teacher and in small virtual groups
  - Use pacing and tracking strategies to monitor their own work
    - Participate in independent work online
    - Complete and submit assigned work tasks
  - Participate in physical activity and mindfulness breaks
- Communicate with teachers about barriers they're experiencing



# TEACHER EXPECTATIONS

- Provide LIVE remote instruction and learning tasks during the portions of the scheduled class time
- Engage students in lessons and activities related to Social Emotional Learning
- Monitor Student Engagement, work completion, and learning progress
- Communicate with students regarding learning progress related to learning targets
- Provide additional mini-lessons or small group instruction for those who need more support
- Take attendance
- Schools will provide a list of any necessary supplies
- Work with colleagues and families to remove barriers to learning
- Schedule an individual education program (IEP) team meeting for each student receiving special education services to develop plans for hybrid and virtual learning environments



# STUDENT LEARNING EXPERIENCE: CANVAS & MICROSOFT TEAMS

Hello and welcome to the class!

[Add narrative here. Example: Here are the things that we will focus on this week...]

Monday	Tuesday	Wednesday	Thursday	Friday
Foundation Block	Foundation Block	Foundation Block	Foundation Block	Foundation Block
Literacy	Literacy	Literacy	Literacy	Literacy
Math	Math	Math	Math	Math

See All Weekly Guides Get Computer Help



Science	Social Studies	Health
Art	Music	P.E.

These buttons will take you to the different tools and information that you need for this class:

Online Learning Guide	How to Use Canvas	Microsoft Teams	Schedule a Meeting with Your Teacher	Infinite Campus Students & Parents
-----------------------	-------------------	-----------------	--------------------------------------	---------------------------------------

Do you need help? Send your teacher a message! Just click on the Inbox icon on the far left side of your screen.

# VIRTUAL STUDENT EXPERIENCE

- Students will be assigned a district-owned device (tablet or laptop) to be used at home
- Each student will be provided a daily schedule for attending and participating in virtual classes through Canvas and Microsoft Teams
- Science, social studies, art, music, and PE instruction will be provided throughout the week
- Students will spend time in learning experiences both with their teacher and others (synchronous) and work on their own (asynchronous)
- Daily live Remote Instruction will be provided daily in Reading, Writing, and Math
- English Language Learner (ELL), Special Education, Gifted & Talented (GT), and intervention supports will be provided virtually
- Breaks/Recess will be scheduled
- Student screen time is limited to 3 to 4 hours per day

# SAMPLE DAILY STUDENT SCHEDULE

SAMPLE ELEMENTARY STUDENT SCHEDULE

Block	Course
8:00-8:30	Morning Meeting, Circle Time, Social/Emotional Learning, etc.
8:30 -10:00	Literacy Instruction – a combination of whole class and small group instruction with built in breaks and independent work time.
10:00-10:15	Break/Recess
10:15-11:00	Math Instruction – a combination of whole class and small group instruction with built in breaks and independent work time.
11:00-11:45	Scheduled rotation of science, social studies, art, music, and PE instruction will be provided.
11:45 - 12:45	LUNCH
12:45-1:15	Break/Recess, independent practice, self-paced learning
1:15-3:00	Student Support – Small group instruction, ELL, Special Education services, individual instruction, enrichment activities, etc.***

You can expect your child to be engaged in a variety of instructional activities and tasks in the following subject areas:

- Literacy: Reading & Writing
- Math
- Extended Core: Art, Music, PE
- Social Studies, Science, and Health

*Please note this is a sample schedule and is only used as an example. Student schedules will vary and will be sent out by their classroom teacher.*

# SAMUELSON MASTER SCHEDULE

- Your classroom teacher will have specific routines and schedules for lessons and activities within each of the instructional blocks.
- Extended Core teachers (Art, Music, P.E.) will meet with students on a 3-week rotation.

MORNING INSTRUCTIONAL SCHEDULE (Extended Core, Title and ELL meet with students during I/E – teachers/assistants work with small groups)					
KINDERGARTEN	1 <sup>ST</sup>	2 <sup>ND</sup>	3 <sup>RD</sup>	4 <sup>TH</sup>	5 <sup>TH</sup>
8:00-8:15 Morning Meeting	8:00-8:15 Morning Meeting	8:00-8:15 Morning Meeting	8:00-8:15 Morning Meeting	8:00-8:15 Morning Meeting	8:00-8:15 Morning Meeting
8:15-8:45 I/E	8:15-9:45 EL Content 8:15-9:00 Reading, Writing, Speaking and Listening 9:00-9:45 Foundations	8:15-9:45 EL Content 8:15-9:00 Reading, Writing, Speaking and Listening 9:00-9:45 Foundations	8:15-9:15 Math 8:15-8:45 Number Sense 8:45-9:15 Core Math	8:15-8:45 I/E	8:15-8:45 Extended Core
8:45-10:15 EL Content 8:45-9:30 Reading, Writing, Speaking and Listening 9:30-10:15 Foundations	9:45-10:45 Math 9:45-10:15 Number Sense 10:15-10:45 Core Math	9:45-10:15 Extended Core	9:15-9:45 Extended Core	8:45-9:15 Extended Core	8:45-10:15 EL Content 8:45-9:30 Reading, Writing, Speaking and Listening 9:30-10:15 ALL Block
10:15-10:45 Extended Core	10:45-11:15 Extended Core	10:15-10:45 I/E	9:45-10:15 I/E	9:15-10:45 EL Content 9:15-10:00 Reading, Writing, Speaking and Listening 10:00-10:45 ALL Block	10:15-10:45 I/E
10:45-11:45 Math 10:45-11:15 Number Sense 11:15-11:45 Core Math	11:15-11:45 I/E	10:45-11:45 Math 10:45-11:15 Number Sense 11:15-11:45 Core Math	10:15-11:45 EL Content 10:15-11:00 Reading, Writing, Speaking and Listening 11:00-11:45 ALL Block	10:45-11:45 Math 10:45-11:15 Number Sense 11:15-11:45 Core Math	10:45-11:45 Math 10:45-11:15 Number Sense 11:15-11:45 Core Math
AFTERNOON INSTRUCTIONAL SCHEDULE					
TEACHERS		STUDENTS			
11:45-12:15	LUNCH	11:45-12:45	LUNCH		
12:15-1:15 M/T/Th/F	Monitoring and Feedback Individual planning time Building level touchpoints	12:45-1:15	Independent practice Self-paced learning		
12:15-3:00 W	PLC, staff meetings, PD, individual planning time, Building or District directed time				
1:15-3:00 M/T/Th/F	Student Support Small Groups Intervention One on one Parent conferences Office Hours	1:15-3:00 M/T/Th/F	Small groups, intervention, one on one, enrichment, independent work/assignments, self-paced learning, synchronous and/or asynchronous		



# STUDENT ATTENDANCE

- Teachers will monitor student participation daily and update attendance records
  - Opportunities for Participation includes:
    - Synchronous learning participation (student participates in group lesson, either synchronously or participate via recording)
    - Canvas module participation (student engages in Canvas module(s))
    - Work submission (student submits evidence or work)
    - Office hour meetings (student meets one on one with teachers regarding instructional content)
- **PARENTS: Please contact your child's school if they are unable to participate in their daily instruction due to illness, internet issues, or other extenuating circumstances.**

# CANVAS FOR PARENTS/GUARDIANS

<http://virtualcampus.dmschools.org/parent-access/parent-guardian-resources>

- Please visit the website above for guidance on creating a parent/guardian account in Canvas
- A parent account can be paired with student accounts
- Please reach out to your child's school if you need assistance pairing your Canvas account to your child's account

# TECHNOLOGY: STUDENT DEVICES



- Student devices (laptops or tablets) will be distributed at your child's schools for those students who didn't receive a district device in the Spring.  
(Dates/Times will be communicated specifically by each school)
- Each student will be assigned a specific device that will stay with them regardless of which DMPS school they attend

# TECHNOLOGY: WI-FI HOTSPOTS DEVICES



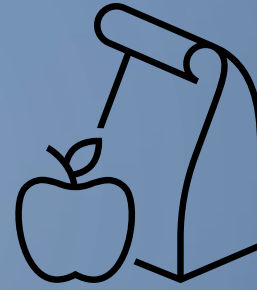
- Please contact your school if you need assistance providing internet connectivity to your student
- Wi-Fi hotspots will be available to distribute to students who need internet connectivity from home
- In the event that the student moves or transfers schools, the hotspot device needs to be returned to the assigning schools

# TECHNOLOGY SUPPORT

- If you or your child is having computer or technology issues, please follow these steps.
  1. If it is a minor technological issue, please contact your child's teacher
  2. If a device isn't working or is broken, please call the Technology Help Desk for assistance: 515-242-8221

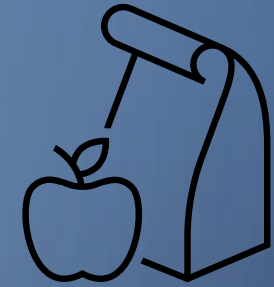


# DISTRICT MEAL DISTRIBUTIONS



- Free meals will be available Monday through Friday from 11:00am-1:00pm at most school buildings
  - EXCEPT: Smouse/Van Meter, Lincoln Rails, Mitchell ECC, Taylor ECC, McKee ECC, and Woodlawn ECC
- Harding, Hoyt, McCombs, Merrill, Meredith and Weeks will also be open Monday through Friday from 4:00pm-6:00pm for working families to pick up meals for their students

# DISTRICT MEAL DISTRIBUTION (CONTINUED)



- Students/Parents can visit any meal site to pick up their meals
- Students do NOT need to be present to receive a meal, but **PARENT MUST PROVIDE THE STUDENT ID NUMBER** to be entered in the system at pickup
- Weekend meals will not be provided
- Any items that need reheated will be sent with directions

# METRO KIDS CHILDCARE

- METRO KIDS: Full-day programming available at nine building sites Monday-Friday from 7am to 5pm for students in Pre-K to 5th
  - CDC and DHS guidelines will be implemented to ensure a safe environment
  - Groups will be limited to 10 to 15 students
  - Temperature Check and Health Screenings will be conducted prior to entering the program
  - Families who have enrolled in MetroKids in previous years will register through SchoolCareWorks Parent Portal
  - New families should e-mail [dmpsmk@dmschools.org](mailto:dmpsmk@dmschools.org) to set up an account

# ADDITIONAL CHILDCARE RESOURCES

- Childcare facilities aligning with DMPS to provide full day care during 100% virtual learning. For more information, please visit their websites.
  - Boys and Girls Club of Central Iowa: [www.bgcci.org](http://www.bgcci.org)
  - Children and Families of Iowa: [www.cfiowa.org](http://www.cfiowa.org)
  - Children and Families Urban Movement: [www.cfum.org](http://www.cfum.org)
  - Highland Park Community Church: Phillip Herman 515-444-7698
  - Oakridge Neighborhood Services: [www.oakridgeneighborhood.org](http://www.oakridgeneighborhood.org)
  - Wilkie House: [www.wilkiehouse.org](http://www.wilkiehouse.org)
  - YMCA: [www.dmymca.org](http://www.dmymca.org)



# FAMILY SUPPORT RESOURCES: WWW.DMSCHOOLS.ORG/FAMILYRESOURCES

- Resources available for:
  - Childcare
  - Housing Assistance
  - Food Assistance
  - Medical Coverage Assistance
  - Employment
  - Financial Assistance
  - Legal Assistance
- Complete the Student Services Contact Form for assistance with additional family needs or supports

The screenshot displays the Des Moines Public Schools website. The header features the school district's name and a navigation menu with links to 'About DMPS', 'Schools', 'News & Information', 'Departments', 'Academics', and 'School Board'. Below the header, a breadcrumb trail shows the path to the 'Online Family Resource Guide'. The main content area includes a large photograph of a family hugging, with a yellow overlay text reading 'Online Family Resource Guide'. A text block on the left states the district's commitment to providing connections to services during the COVID-19 closure. A 'Student Services Contact Form' link is highlighted in a grey box. On the right, a yellow bar is followed by a list of links: 'DMPS Coronavirus Info', 'Online Learning Resources', 'Student Services Contact Form', and 'DMPS Family Call Center'.

Des Moines  
PUBLIC SCHOOLS

About DMPS Schools News & Information Departments Academics School Board

Home / Online Family Resource Guide

Online Family Resource Guide

Des Moines Public Schools is committed to providing as many connections to services for students and families as possible during the COVID-19 closure. We know these are challenging times. While our staff cannot replicate the support provided in person at school, we will continue to work tirelessly to find as many resources for families as possible. Please check back regularly as this list will be updated as our community finds new ways to adapt to a new normal during the Coronavirus pandemic.

[Student Services Contact Form](#)

If you cannot find assistance on this page, please [click here](#) to complete our contact form so our staff can follow up with you.

[DMPS Coronavirus Info](#)

[Online Learning Resources](#)

[Student Services Contact Form](#)

[DMPS Family Call Center](#)



The background is a dark blue gradient. In the corners, there are white line art illustrations of circuit boards or neural networks, with lines connecting to small circles.

WE LOOK FORWARD TO “SEEING” STUDENTS  
VIRTUALLY ON THEIR FIRST DAY, SEPTEMBER 8, 2020

- If you have any questions, please contact your child’s school.